

HOLLOW CORE PLANK CONNECTION

SOFT JOINT AT NON-BEARING PARTITION WALL

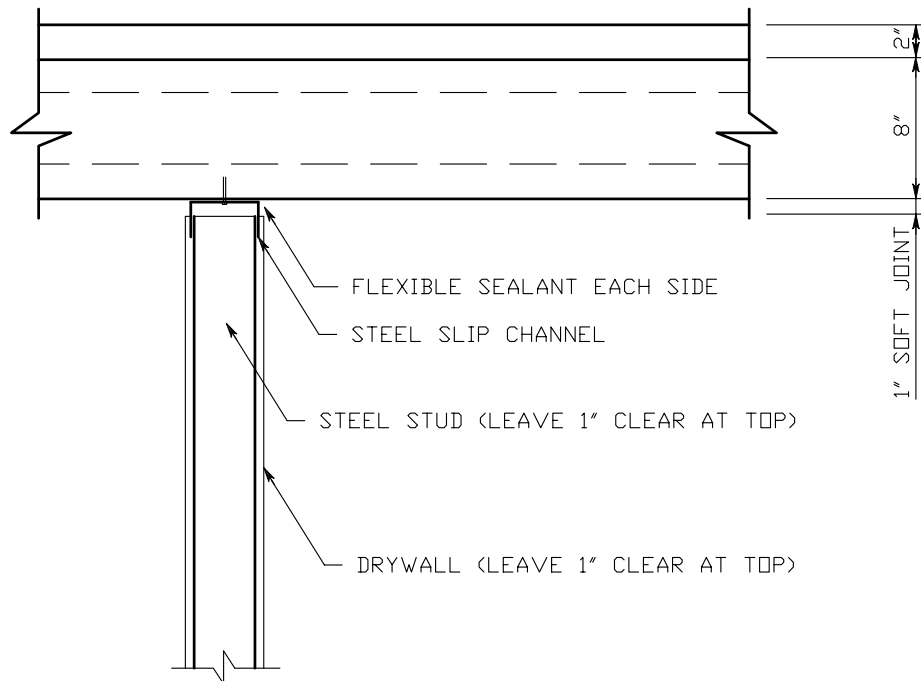
2655 MOLLY PITCHER HIGHWAY SOUTH
BOX N, CHAMBERSBURG, PA 17201-0813
(717) 267-4505 FAX (717) 267-4518
ESTABLISHED 1923

NITTEHOUSE

CONCRETE PRODUCTS



CONCRETE



NOTES:

1. 1" CLEARANCE (SOFT JOINT) SHALL BE PROVIDED ABOVE NON-LOADBEARING PARTITIONS TO ALLOW FOR DEFLECTION OF THE HOLLOW CORE PLANK.