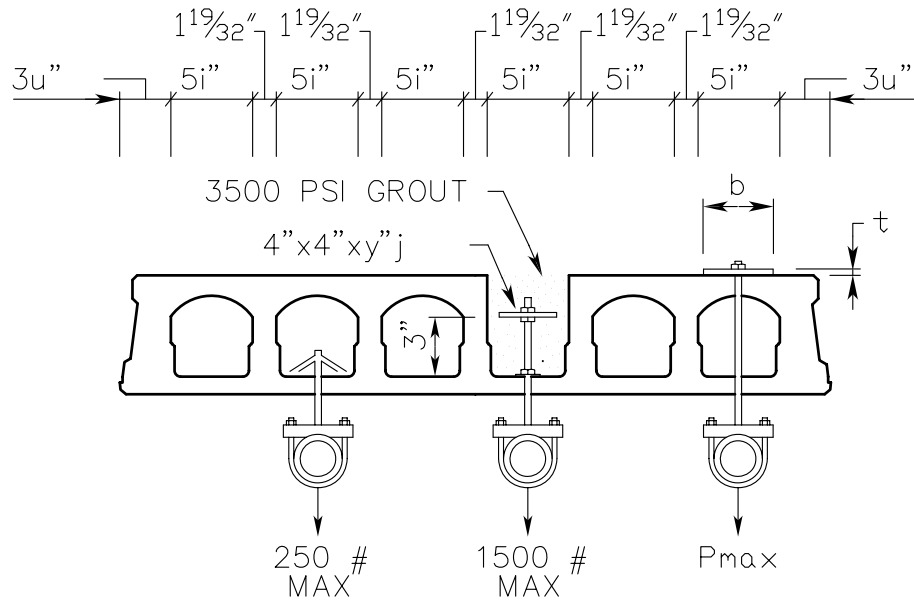


HOLLOW CORE PLANK CONNECTION

CAPACITIES FOR MECHANICAL HANGERS



(HANGERS TO BE SPACED NO CLOSER THAN 7w" O.C.)

NOTE: FOR LIGHTER LOADS
DRILL-INS AND POWDER
ACTIVATED FASTENERS CAN BE
USED WITH A MAXIMUM DEPTH
OF 1".

b (in.)	t (in.)	Pmax
2"	3/8"	710#
3"	3/8"	890#
4"	3/8"	1130#
5"	3/8"	1500#